

 Le macchine di bonifica e di collaudo possono essere inserite in linea oppure lavorare stand-alone secondo le esigenze produttive.

Soluzioni flessibili e modulari per gruppi di 5, 10, 15 o 20 bombole per volta.

Macchine di collaudo in linea oppure a carosello.

Collaudo effettuato mediante test idrostatico per un funzionamento in sicurezza rispondente alle normative internazionali.

Pressione di collaudo tarabile fino a 40 bar.

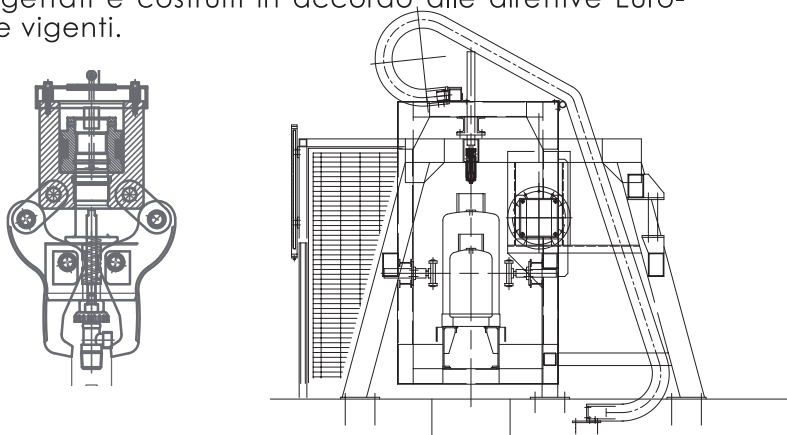
Rotazione del banco di collaudo per una visione sia del fondo che di tutto il corpo della bombola.


Bonifica delle bombole mediante apparecchiature di svuotamento e di lavaggio interno a pressione.

Impianti di depurazione aria ed acqua.

Versioni standard ed Atex.

Progettati e costruiti in accordo alle direttive Europee vigenti.



 Machinery for purging and testing can be supplied in-line or stand-alone, according to production needs.

Flexible and modular solutions for groups of 5, 10, 15 or 20 cylinders at one time.

In-line or carousel testing machines.

Hydrostatic testing inspection for safe operation meets international standards.

Testing pressure adjustable up to 40 bar.

Tilting of the test bench to clearly see the bottom and the whole body of the cylinders.

Purging of the bottles by means of the emptying units and internal pressure washing.

Air and water purification systems.

Standard and Atex versions.

Designed and constructed in accordance with European Regulations.



🇬🇧 Machinery for purging and testing can be supplied in-line or stand-alone, according to production needs

Flexible and modular solutions for groups of 5, 10, 15 or 20 cylinders at one time.

In-line or carousel testing machines.

Hydrostatic testing inspection for safe operation meets international standards.

Testing pressure adjustable up to 40 bar.

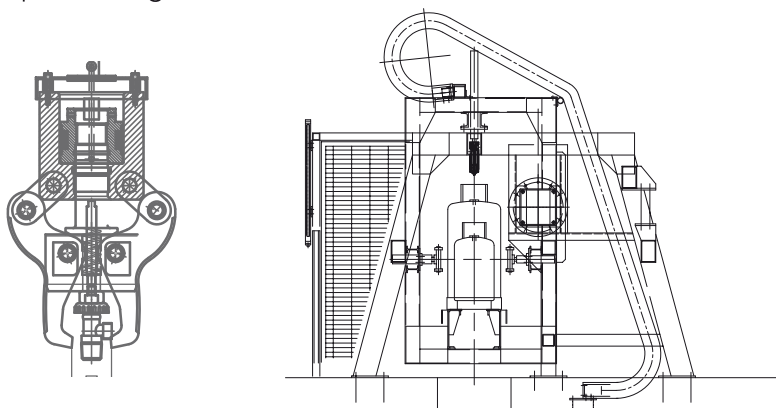
Tilting of the test bench to clearly see the bottom and the whole body of the cylinders.

Purging of the bottles by means of the emptying units and internal pressure washing.

Air and water purification systems.

Standard and Atex versions.

Designed and constructed in accordance with European Regulations



🇫🇷 Les machines de traitement et de contrôle peuvent être placées à la chaîne, ou travailler de manière autonome selon les besoins de la production.

Solutions flexibles et modulaires par groupes de 5, 10, 15 ou 20 bouteilles à la fois.

Les machines de contrôle peuvent être placées en ligne ou en forme de type carrousels. Le contrôle s'effectue avec un test hydrostatique pour un fonctionnement en sécurité répondant aux normes internationales.

La pression de contrôle pouvant être tarée jusqu'à 40 bar.

La rotation du tableau de contrôle vous donne une vision complète du fond et du corps de la bouteille.

Traitement des bouteilles par un système de vidange et de nettoyage intérieur à pression.

Installations d'épuration de l'air et de l'eau.

Versions standards et Atex.

Conçues et construites conformément aux directives européennes en vigueur.

